

Figure 7: Position of the Eltville tuff layer in the C. B. R. quarry near Lixhe.

7A: SSW-NNE cross-section of a dry valley with the Eltville tuff.

7B: Detailed profile of the undisturbed Eltville tuff layer.

7C: Detailed profile of the disturbed Eltville tuff layer (cryotubated).

7D: Detailed profile of the disturbed Eltville tuff layer (soliflucted).

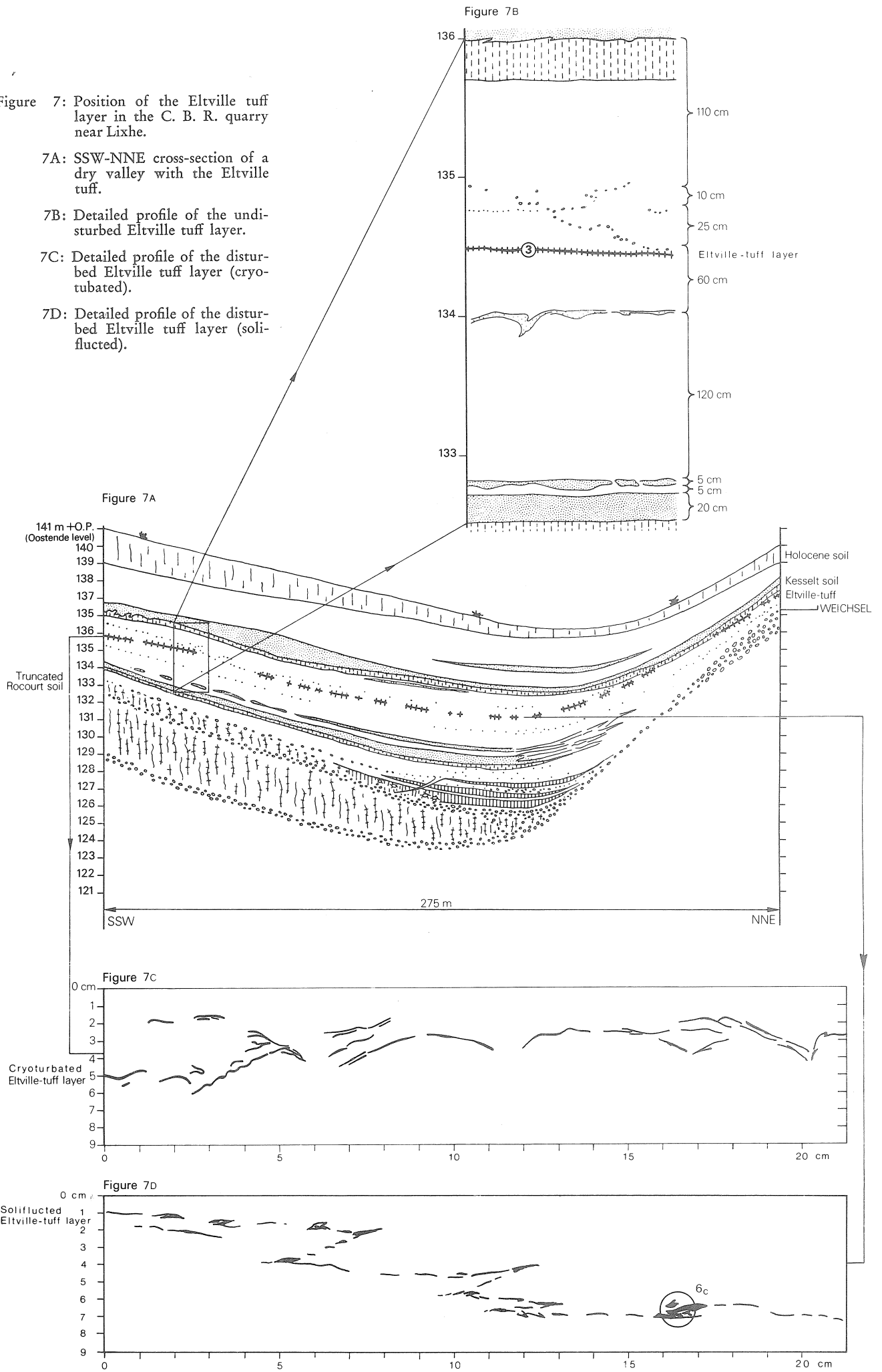


Figure 7B

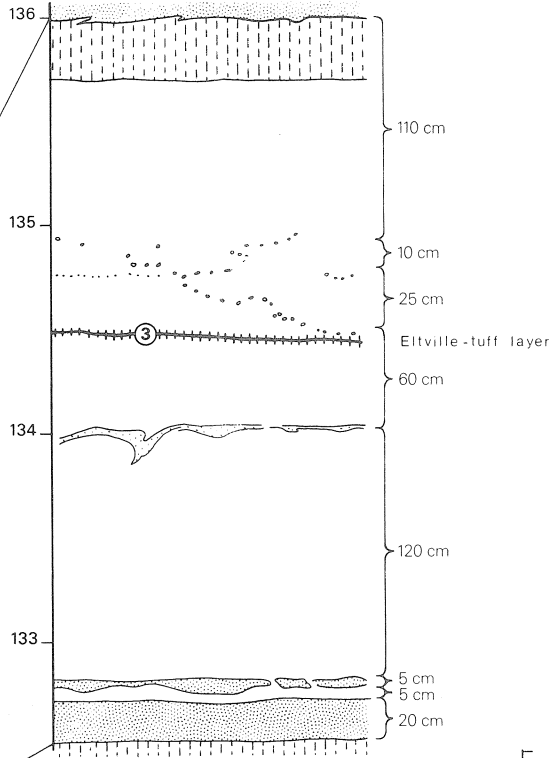


Figure 7A

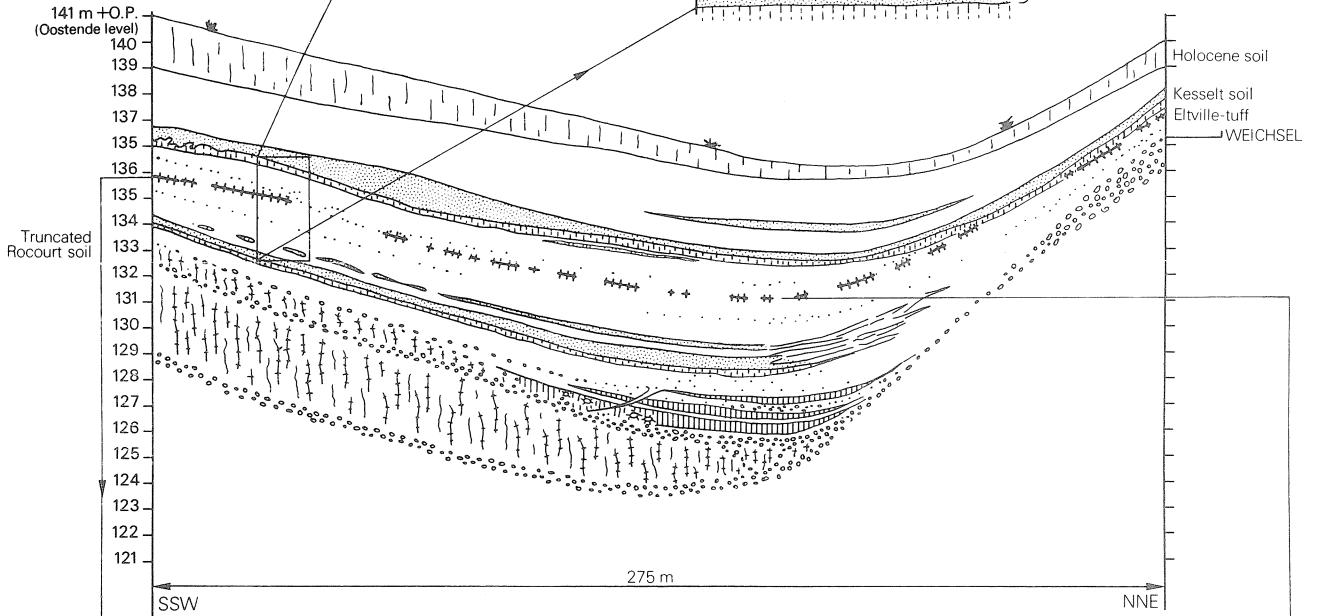


Figure 7C

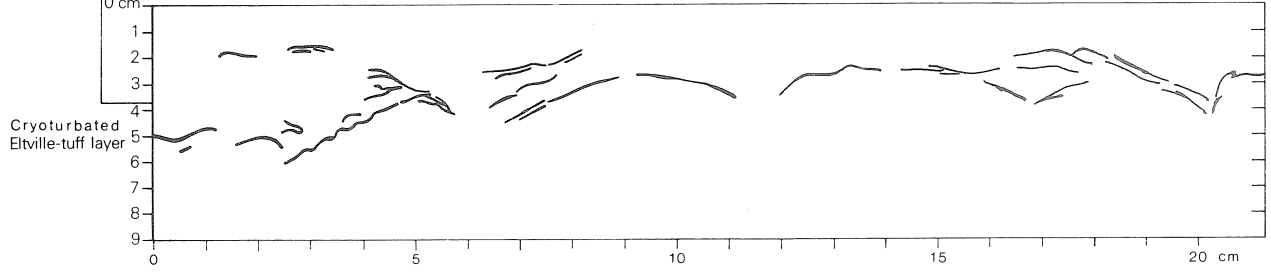


Figure 7D

